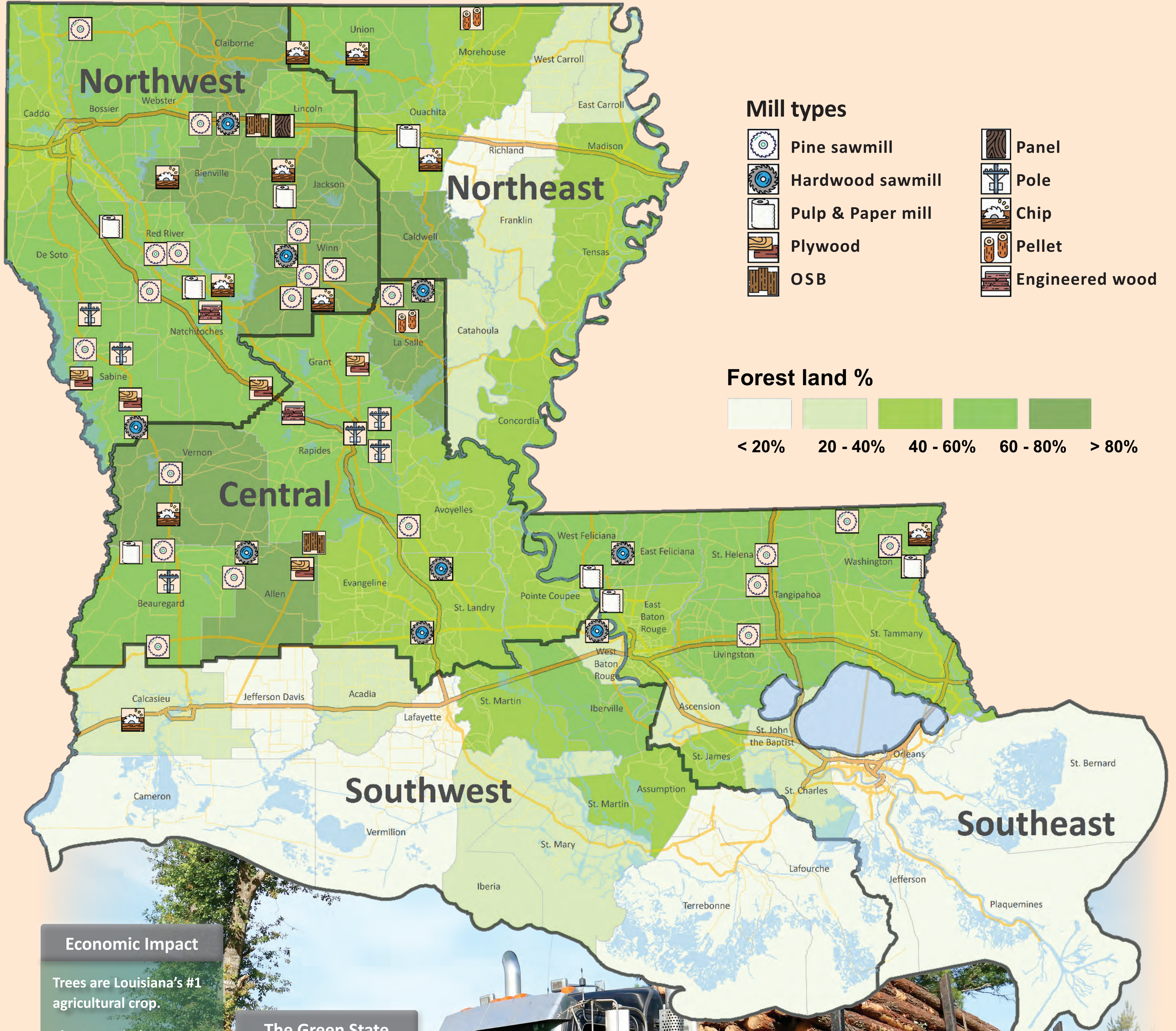
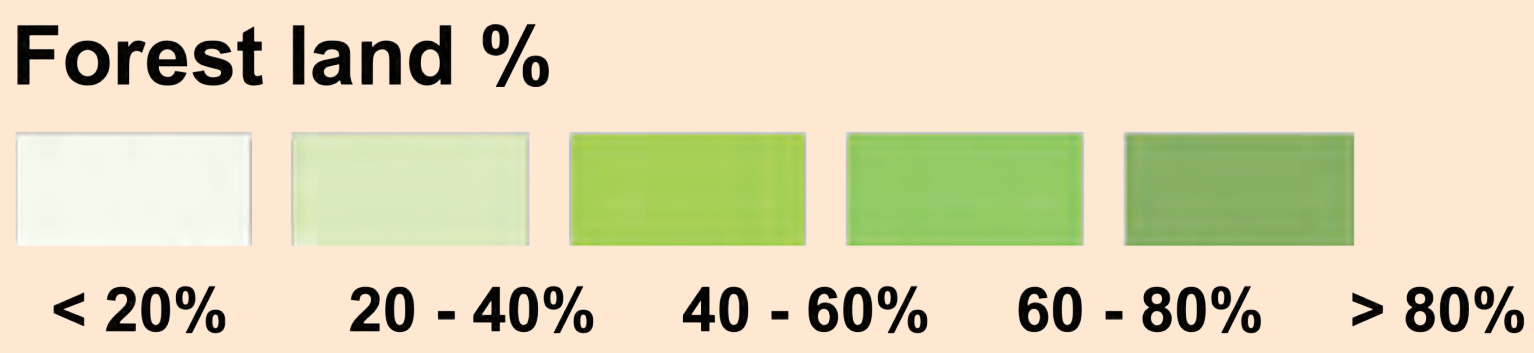


# Louisiana Forestry



- Mill types**
- Pine sawmill
  - Hardwood sawmill
  - Pulp & Paper mill
  - Plywood
  - OSB
  - Panel
  - Pole
  - Chip
  - Pellet
  - Engineered wood



**Economic Impact**

Trees are Louisiana's #1 agricultural crop.

The Forest industry makes a substantial economic contribution to the state's economy every year, especially in rural areas, amounting to \$12.5 billion in 2020.

**The Green State**

15 million acres of the state are considered forested, growing an estimated 9.33 billion trees.

13 million acres are privately owned, the balance in public ownership includes the Kisatchie National Forest and the Louisiana State Forest.

**Income from Forests**

Wages and income from the forest are around \$3 billion annually. Federal, state, and local taxes resulting from forestry activities exceed \$733 million annually.

**Income from Forests**

Forestry-related jobs occur primarily in rural areas. Direct, indirect, and induced jobs attributed to a healthy forest industry exceed 48,873 jobs in 2020.

**Trees - clean water, clear air, recreation and scenery!**

Forests touch every aspect of our lives. Well-managed forests provide a great variety of goods and services, such as timber products, clear water, homes for wildlife, and beautiful landscapes, and by sequestering carbon, forests remove 12-14 percent of total U.S. greenhouse gas emissions each year. We have the responsibility to protect the forests, not just for ourselves but for the generations to come.