

Nature is a great teacher, and getting kids outside to learn and play is good for their brains and their bodies. Try this outdoor activity from Project Learning Tree®—it's safe, fun, and educational!

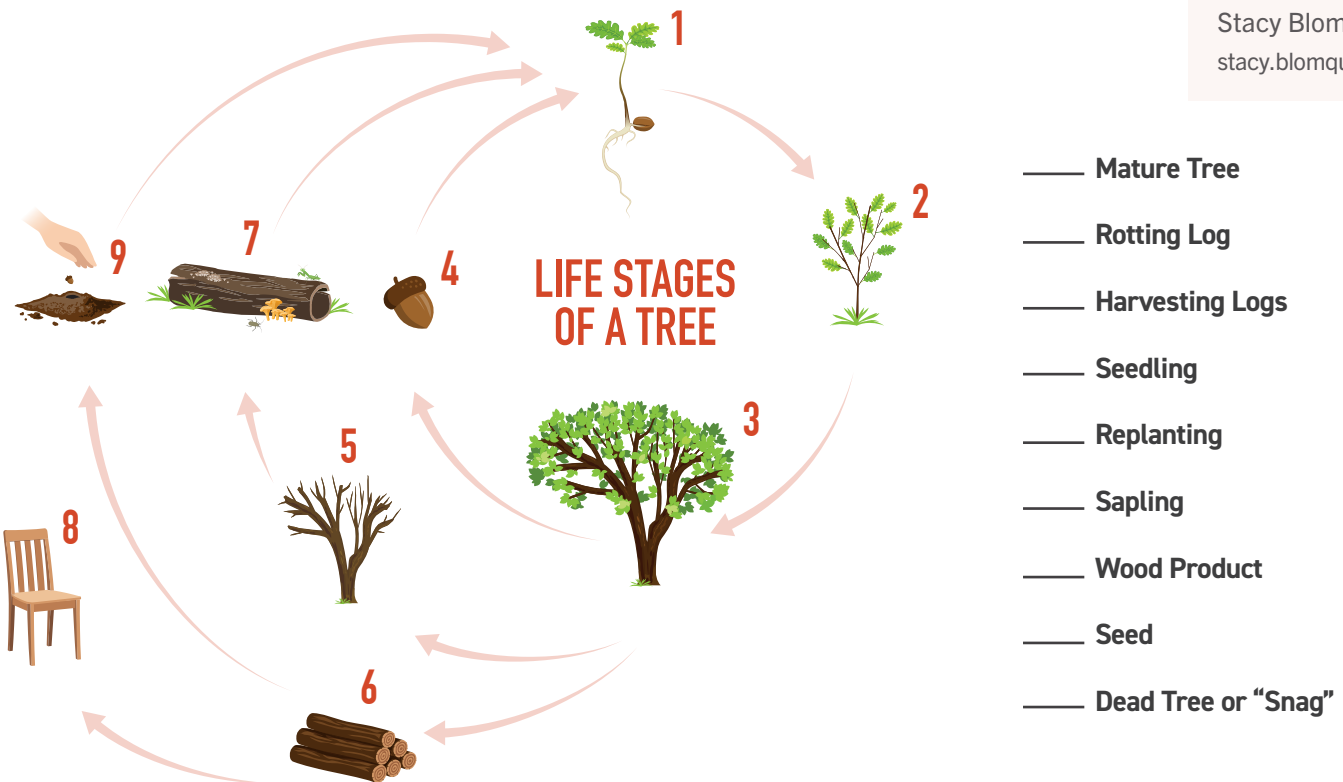
A TREE'S LIFE

Discover that trees have life stages that are similar to those of other living things.

Trees, like all living things, have life stages that include starting their lives, growing, experiencing injury or disease, aging, and dying. As trees go from birth to death, their physical forms change, as well as their role in the forest ecosystem. Next time you are at the park or among trees, ask children to identify the various stages of a tree's life. Ask them:

- Are trees alive? How do you know?
- How are trees born? Do they die?
- How does a tree's life compare to the life of a person?
- Can you find a young tree? An adult tree? An elderly tree? A dead tree?
- How do people benefit from trees at different life stages?
- How do people help trees at different life stages?

Have children match up the numbers for the tree life stages with their names.



CONNECT KIDS TO NATURE!

Encourage your child's school to incorporate outdoor learning by connecting with your local PLT program.

Contact the Louisiana PLT State Coordinator:
Stacy Blomquist
stacy.blomquist@usda.gov